



Cargo

Kornwestheim Railport

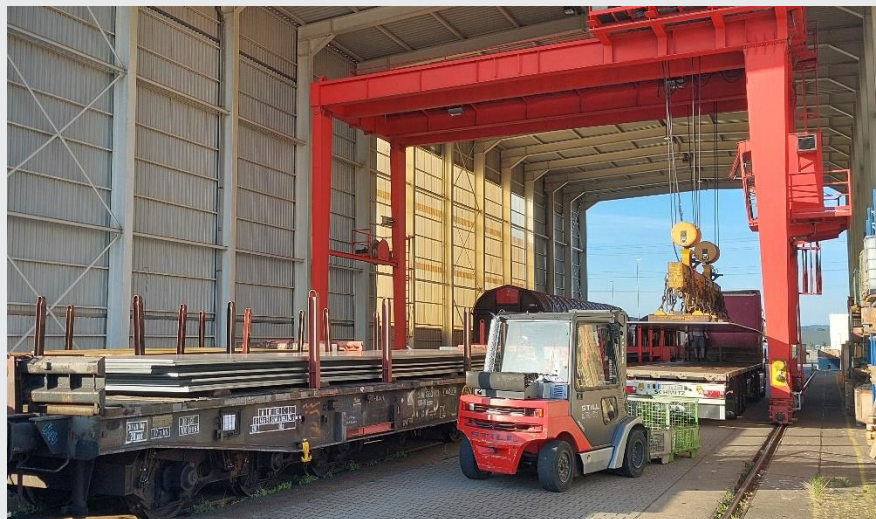
May 2023 | © DB Cargo / Kornwestheim Railport

Versatile and safe transhipment from road to rail

- **Rail access point** for customers without their own private siding
- Direct connection to the **Kornwestheim marshalling yard** as well as to main roads and motorways
- **Safe and professional transhipment** between rail and road and from HGV to HGV
- **Handling of a wide variety of goods**, such as steel sheets, slabs, faggots, bars, sheet stacks, coils, customised and construction machinery, non-containerisable freight and palletised goods
- **Gantry crane** with various crossbeams for versatile transhipment of a wide range of goods
- Organisation of **pre-carriage and onward carriage by HGV** with long-standing trucking service providers

Kornwestheim Railport in figures:

Tracks under crane:	2 x 80 m
Load capacity of gantry crane:	50 t
Load capacity of lifting gear (2 units):	25 t
Load capacity of magnetic beam:	35 t
Load capacity of coil hook:	25 t
Public sidings:	2
End-loading platforms:	2
Side-loading platform:	60 m
Load limit of forklift truck:	5 t



Your contact person: Ingo Bethge, phone: +49 7154 203-441, e-mail: ingo.i.bethge@deutschebahn.com